



20 Orange Street London WC2

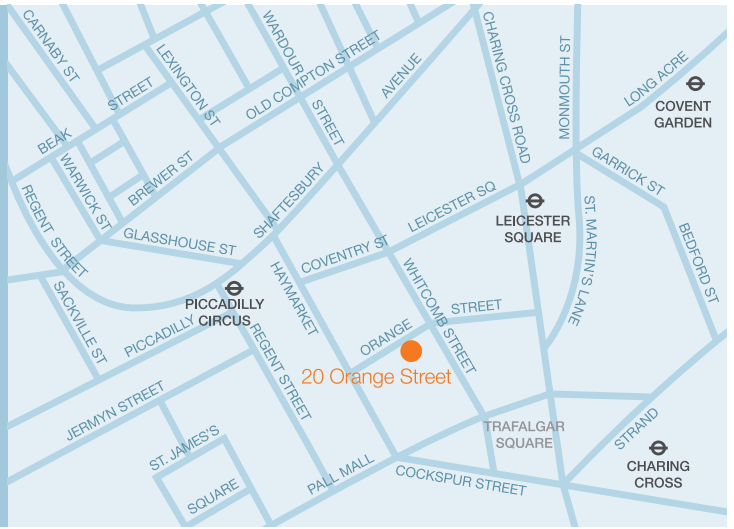
Air-Conditioned Offices To Let
2,087 Sq Ft (193.9 Sq M)

20 Orange Street London WC2

LOCATION

The property is located on the south side of Orange Street, which links Haymarket and Charing Cross Road, close to its junction with Whitcomb Street. The area offers many amenities and facilities for both business and social purposes.

The building is within a short walk of Piccadilly Circus, Leicester Square, and Charing Cross underground stations in addition to Charing Cross mainline station. Several bus routes are also within easy access.

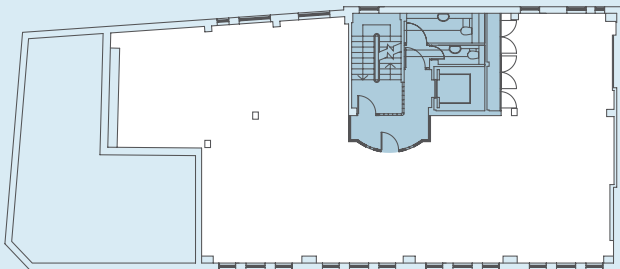


ACCOMMODATION

The second floor has been fully refurbished to provide a high quality open-plan office floor of 2,087 sq ft (193.9 sq m).

AMENITIES

- Air-conditioning
- Raised floors
- LG7 compliant lighting
- Suspended ceiling
- 8 person passenger lift
- Capped-off services
- Male and female WCs
- Commissionaire
- New carpets



Indicative only.



VIEWING

Strictly by appointment.

CONTACT

Tom Tregoning

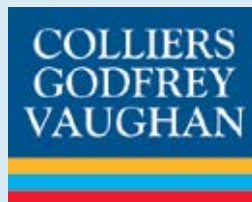
020 7487 1813

tom.tregoning@colliersgodfreyvaughan.co.uk

Mike MacKeith

020 7487 1942

mike.mackeith@colliersgodfreyvaughan.co.uk



Property Misdescriptions Act 1991 / Misrepresentation Act, 1967. Colliers Godfrey Vaughan for themselves and for the vendors of this property whose agents they are, give notice that: These particulars do not form any part of any offer or contract: the statements contained therein are issued without responsibility on the part of the firm of their clients and therefore are not to be relied upon as statements or representations of fact, any intending purchaser must satisfy himself as to the correctness of each statements made herein: and the vendor does not make or give, and neither the firm nor any of their employees have any authority to make or give, any representation or warranty whatever in relation to this property. May 2008

Designed and produced by **citywise** 020 7383 4000 www.citywise.co.uk

